



## Sliding Door Systems

"They have an innate understanding and appreciation for modern design — paying attention to details like clean and thinner profiles that many architects are drawn to."

— Jimmy Sullivan, owner, CitiZen Design Studio

Design Better

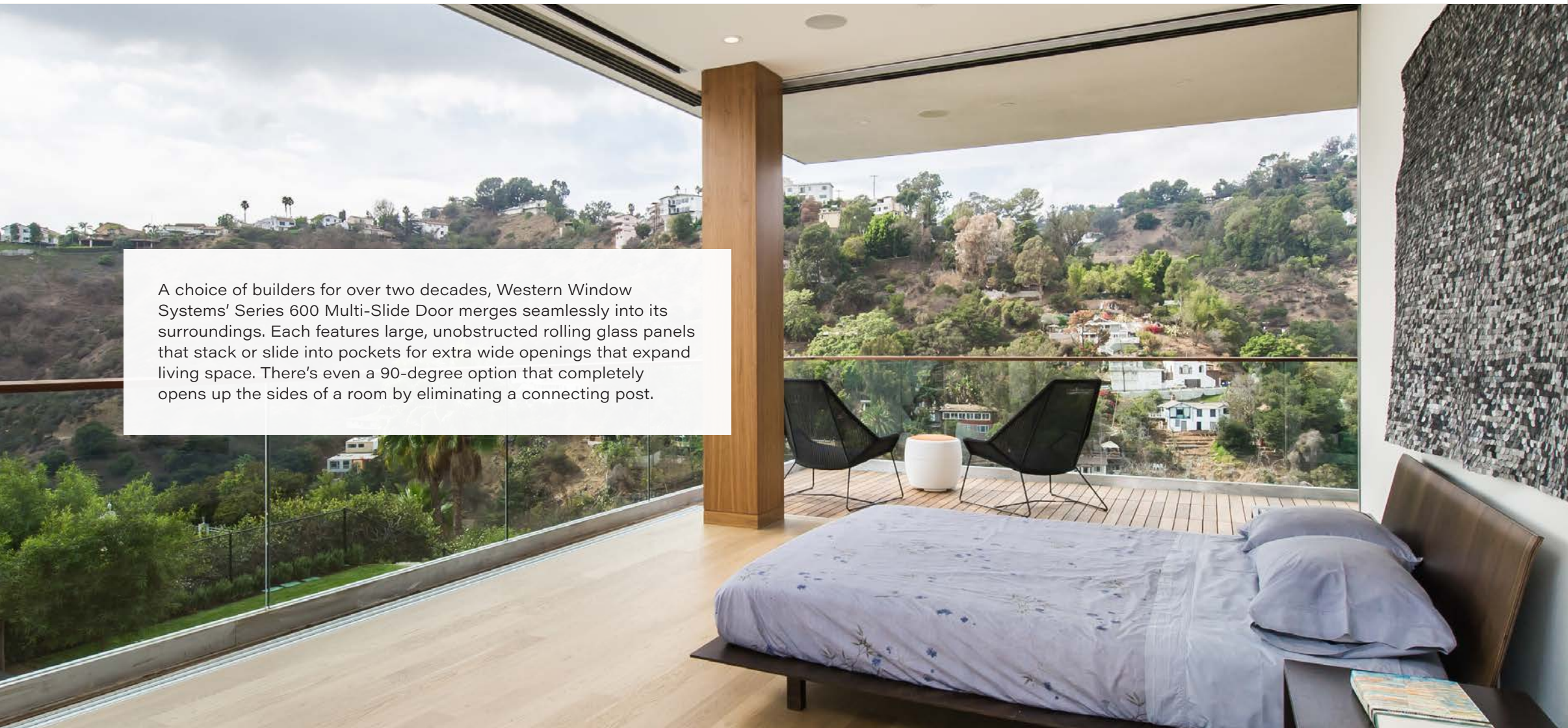


The image shows a spacious, modern interior with a large multi-slide glass door. The room features light wood flooring, a dark brick wall on the left, and a large potted plant. The furniture includes a dark sofa, a light armchair, a coffee table, and a dining table with chairs. A balcony with a metal railing and a view of a city and mountains is visible through the glass door. A pendant light hangs over the dining area.

## Series 600 Multi-Slide Door



# Series 600 Multi-Slide Door



A choice of builders for over two decades, Western Window Systems' Series 600 Multi-Slide Door merges seamlessly into its surroundings. Each features large, unobstructed rolling glass panels that stack or slide into pockets for extra wide openings that expand living space. There's even a 90-degree option that completely opens up the sides of a room by eliminating a connecting post.



### Clean Design

Designed to seamlessly blend into nearly any space, the Series 600 features a 2.55" interlock stile, wide panels, and modern details that allow for more light and glass.

### Climate Ready Glass

Our dual-paned low-E glass can be customized in a variety of types, colors, and thicknesses for improved privacy, protection, and thermal efficiency.

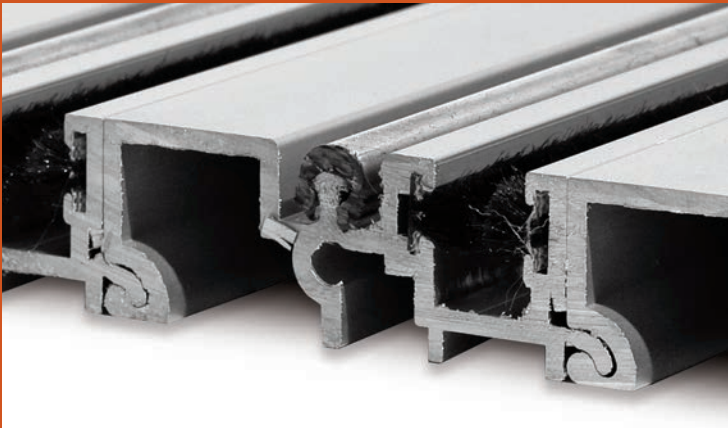
### Configurations and Sizes

The Series 600 Multi-Slide Door is available in any configuration, with panels up to 84" wide and 144" tall (maximum 60 square feet). For complete flexibility, it can be designed to do things like go around curves, bypass obstacles, and bi-part in the center. Nearly any shape is possible, including open corners.



Concealed Locking System

The Series 600 includes a hidden stainless steel multi-point lock to secure its large sliding panels, providing additional strength and protection. A keyed cylinder option is available.



Smooth Operation

Sealed stainless steel ball bearing rollers make our multi-slide doors easy to operate. An interlocking track design provides structural integrity and makes it possible to span wide openings with almost any number of panels.



Classic or Thermally Broken Aluminum

Classic aluminum provides effortless operation, versatility, and a clean aesthetic. Our thermally broken option provides the same functionality, but with an insulating barrier that increases energy performance in colder climates.



Heavy Duty Hardware

Rolling hardware includes two options: a standard 1.81" size and our 3" Monster Roller, capable of handling more than twice the weight of the largest panel.



# Options: Series 600 Multi-Slide Door



## Screen

Our aluminum frame panel screen integrates seamlessly with our sliding glass doors while providing optimal ventilation and protection from outside pests.

## System Automation

All Western Window Systems multi-slide doors are designed with automation in mind. All automation systems are designed, purchased, and installed by third parties. Contact us to find one near you.



### Water Barrier Sill

The water barrier sill's 1.5" interior leg and weep-hole system safeguards against water intrusion. For additional protection, the back leg of each sliding panel penetrates the track to keep out dust and debris.



### Flush Sill

When ease of entry is more important than performance against the elements, our flush sill is the perfect choice. With an interior and exterior sill height of just 0.75", it lines up with most interior flooring for a smooth transition to the outside. Weep holes in the track allow water to drain away from the door while the back leg of each sliding panel discourages dust and debris.



### Thinline Sill

The ability of our signature thinline sill to hide almost completely makes it ideal for projects where a continuation of flooring from the inside to the outdoors needs to appear virtually seamless. Staggered tracks expose a slim channel on which the panels roll, with the finished floor installed between them.

Note: Thinline and flush sills may be less effective at preventing water penetration than the water barrier sill and therefore may not be appropriate in all climates, conditions, and exposures.



### Premium Handle

Our optional premium handle features a minimal one-piece design, comfortable grip, and the option of a keyed cylinder that allows the door to be unlocked from the exterior. Finish is available in brushed nickel or black. The premium handle is not available on pocketing multi-slide door systems.



### Flush-Mounted Handle

The standard choice for all of Western Window Systems' multi-slide doors, the flush-mounted handle's clean, narrow design allows panels to easily slide past each other or into a pocket. An optional keyed cylinder allows the door to be unlocked from the exterior. Finish choices are available in brushed nickel or black.

## Finishes

Aluminum finishes are available in-stock, as designer selections, and can be customized to match nearly any color. For approximate finish options, see page 122. For exact paint swatch samples, contact us.



A modern bedroom with a large multi-slide wood door. The room features a white tufted bed with yellow and white pillows, a yellow throw blanket, and a white ottoman. A large multi-slide wood door with a dark wood frame and light-colored wood panels provides a view of a patio and a cityscape. The ceiling has a dark wood fan and recessed lighting. A framed abstract painting is on the wall.

## Series 2600 Aluminum-Clad Multi-Slide Wood Door

"It's an overall feeling that you can take  
a wall, open it, and the whole outside  
becomes part of the inside."

– Rick Salter, builder and dealer



# Series 2600 Aluminum-Clad Multi-Slide Wood Door



Western Window Systems' Series 2600 Aluminum-Clad Multi-Slide Wood Door features the best of two worlds. Inside: the beauty and warmth of wood, with durable panels that can be stained or painted to fit any style of project. Outside: low-maintenance, durable aluminum – painted or anodized – to complement an endless array of exterior color schemes. It's indoor-outdoor living your way, inside and out.



## Clean Design

The Series 2600 includes your choice of a 3.62" or 5" interlock stile profile and bottom rails available in 3.62", 5", and 8" dimensions. Wood panels are built from strong LVL (laminated veneered lumber) cores that include a stain-grade wood veneer on the interior, allowing you to stain or paint the wood as you see fit.

## Heavy Duty Hardware

Rolling hardware includes two options: a standard 2.12" size and our 3" Monster Roller, capable of handling more than twice the weight of the largest panel.

## Concealed Locking System

The Series 2600 includes a hidden stainless steel multi-point lock to secure its large sliding panels. A keyed cylinder option is available.

## Smooth Operation

Sealed stainless steel ball bearing rollers make our multi-slide doors easy to operate. An interlocking track design provides structural integrity and makes it possible to span wide openings with almost any number of panels.

## Climate Ready Glass

Our dual-paned low-E glass can be customized in numerous types, colors, and thicknesses for more privacy, protection, and thermal efficiency.

## Designed and Tested for Durability

Manufactured for strength and built to last, the Series 2600 features extruded aluminum cladding on the exterior and wood panels made from strong, FSC-certified woods.

## Configurations and Sizes

The Series 2600 Multi-Slide Door is available in any configuration, with panels up to 84" wide and 144" tall (maximum 60 square feet). For additional flexibility, it can be designed to meet at a 90-degree angle to open up the sides and corner of a room or, for projects with limited side space, bi-part at the center.



# Options: Series 2600 Aluminum-Clad Multi-Slide Wood Door



## Aluminum Finishes

Aluminum finishes are available in-stock, as designer selections, and can be customized to match nearly any color. For approximate finish options, see page 122. For exact paint swatch samples, contact us.

## System Automation

All Western Window Systems multi-slide doors are designed with automation in mind. Trusted third parties handle the design, purchase, and installation of all automation systems. Contact us to find one near you.

## Screen

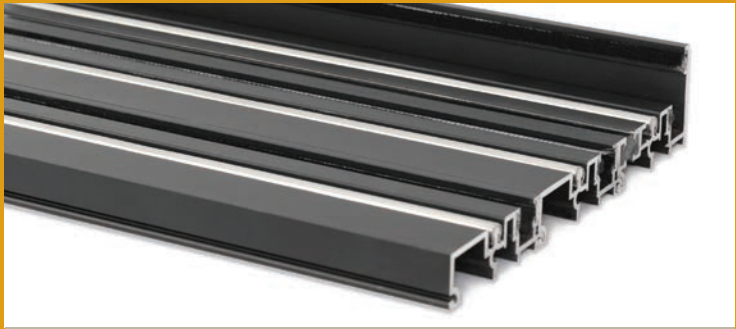
Our aluminum frame panel screen integrates seamlessly with our sliding glass doors while providing optimal ventilation and protection from outside pests.

## Panel Styles

Panels can be 1.75" or 2.25" thick and are available in two styles: traditional and contemporary. Perfect for when you need to match classic wood windows or doors, traditional panels feature a beveled glazing leg, interior wood stops, and offer 1.125" and 0.875" simulated divided lite options. For a more updated look, the contemporary panel's clean lines include a straight glazing leg and a square wood stop. Simulated divided lite options of 1.5" and 0.875" are also minimal in design.

## Woodgrain Finishes

Our LVL (laminated veneered lumber) cores include a stain-grade wood veneer on the interior that allows staining or painting as you wish. The standard interior finish is stain-grade pine with an option for vertical grain fir. Custom wood species are available. For approximate woodgrain finishes, see page 122.



### Water Barrier Sill

The water barrier sill's 1.5" interior leg and weep-hole system safeguards against water intrusion. For additional protection, the back leg of each sliding panel penetrates the track to keep out dust and debris. Available only in black.



### Flush Sill

When ease of entry is more important than performance against the elements, our flush sill is the perfect choice. With an interior and exterior sill height of just 0.75", it lines up with most interior flooring for a smooth transition to the outside. Weep holes in the track allow water to drain away from the door while the back leg of each sliding panel discourages dust and debris by penetrating the track. Available only in black.



### Thinline Sill

The ability of our signature thinline sill to virtually disappear makes it perfect for projects where a continuation of flooring from the inside to the outdoors needs to be seamless. Staggered tracks expose a slim channel on which the panels roll, with the finished floor installed between them.

Note: Thinline and flush sills may be less effective at preventing water penetration than the water barrier sill and therefore may not be appropriate in all climates, conditions, and exposures.



### Flush-Mounted Handle

The standard choice for all of Western Window Systems' multi-slide doors, the flush-mounted handle's clean, narrow design allows panels to easily slide past each other or into a pocket. An optional keyed cylinder allows the door to be unlocked from the outside. Choices of finish are brushed nickel or black.



### Premium Handle

Our optional premium handle features a minimal one-piece design, comfortable grip, and the option of a keyed cylinder that allows the door to be unlocked from the exterior. Finish choices are available in brushed nickel or black. The premium handle is not available on pocketing multi-slide door systems.