

A modern wooden cabin with a large glass door and a wooden deck, situated on a hillside with a large tree and a view of a valley. The cabin has a dark metal roof and a wooden exterior. The deck is made of light-colored wood and has a table with a white tablecloth and four chairs. There are two small statues of dogs on the deck. The background shows a valley with mountains in the distance under a blue sky with some clouds.

Hinged Doors

Design Better



# Series 900 Hinged Door

A true triumph of versatility, our Series 900 Hinged Door excels in both residential and commercial applications. Featuring wide glass panels that maximize views and let in light, it's perfect for creating an impressive main entrance, allowing a smooth transition from room to room, or connecting the indoors with the outside via a patio, deck, or balcony. For further customization, the Series 900 can be combined with our window selections.

## Smooth Operation

A continuous hinge, strong enough to support panels as wide as 5' and finished to match the frame color, keeps the Series 900 operating smoothly for years to come. An optional concealed overhead closure and secondary lock ensure the door is self-closing.

## Classic or Thermally Broken Aluminum

Classic aluminum provides effortless operation, versatility, and a clean aesthetic. Our thermally broken option provides the same functionality, but with an insulating barrier that increases energy performance in colder climates.

## Climate Ready Glass

Our dual-paned low-E glass can be customized in several types, colors, and thicknesses for enhanced privacy, protection, and thermal efficiency.

## Heavy Duty Hardware

On doors over 96" tall, roller catches are utilized to help pull the door in tight. Have your own custom hardware in mind? Contact a representative.

## Built to Last

The top and bottom rails of the Series 900 Hinged Door nest with the stiles to eliminate sunlight at the corners. Each corner is secured with a tie rod for a permanent, rigid connection. On hinged door pairs, the passive panel features continuous weatherstripping for additional protection.

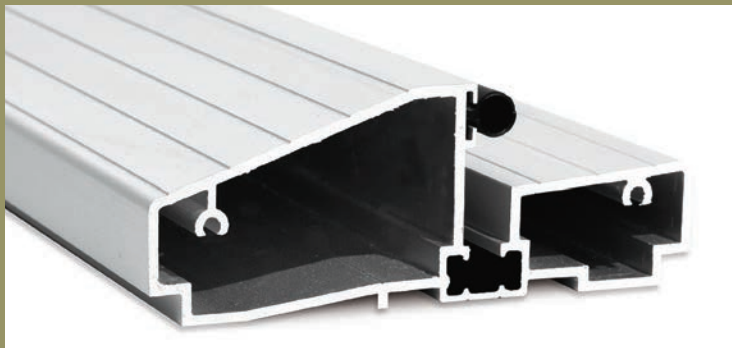
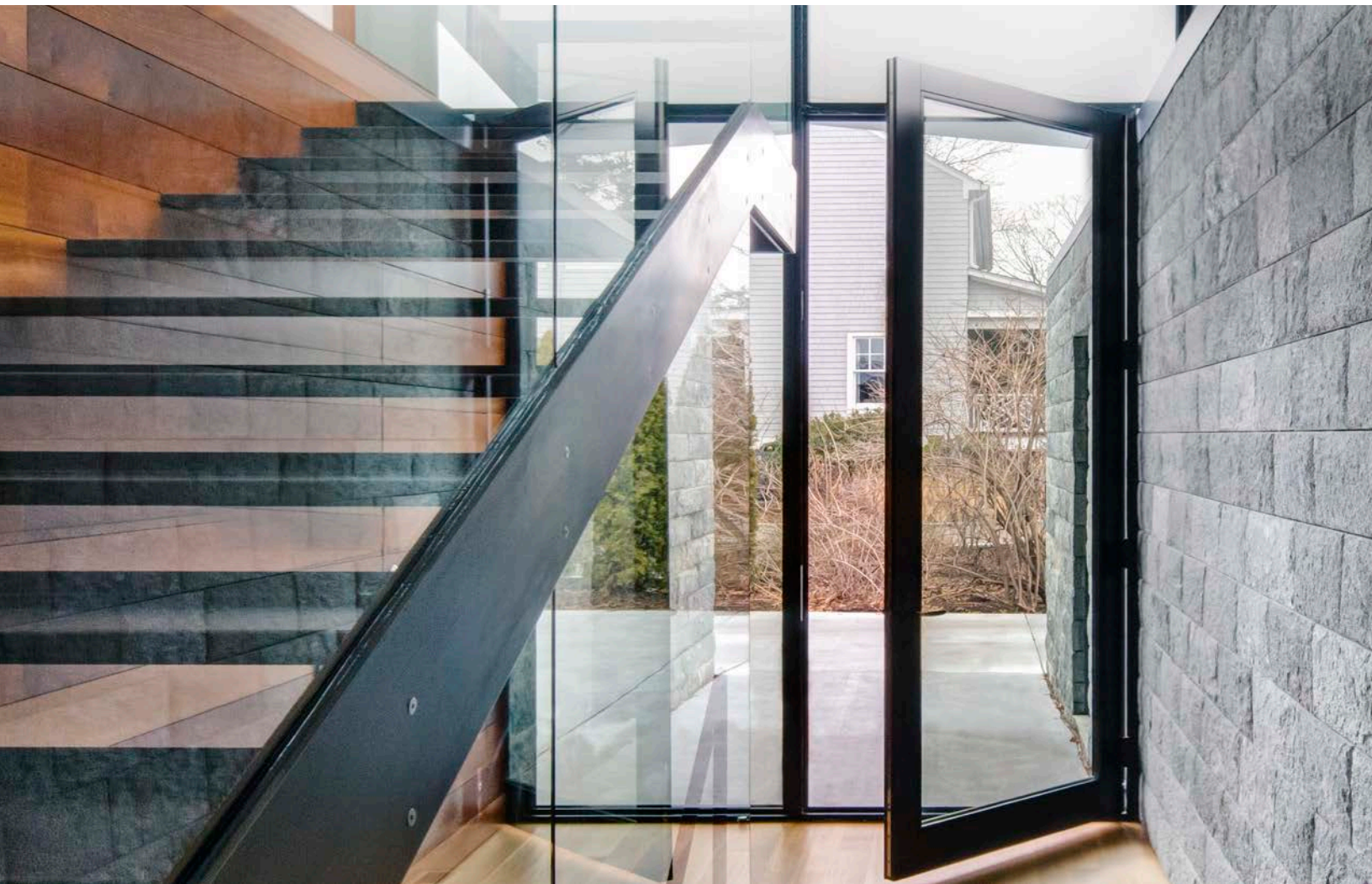
## Configurations and Sizes

The Series 900 thermally broken hinged door is available as single leaf with medium stile up to a size of 45" x 121.5"; a single leaf with narrow stile up to 39" x 109.5"; a hinged pair with medium stile up to 87" x 121.5"; and a hinged pair leaf up to 75" x 109.5". Available in single or double inswing and outswing configurations. For even more design flexibility, it can be partnered with any of our window styles.





# Options: Series 900 Hinged Door



**Standard Threshold**

Ideal for residential applications, the standard threshold is 4.5" wide and features a 1" exterior step (1.68" for inswing doors) that protects against water penetration and allows full perimeter weatherstripping on outswing doors, reducing air infiltration. Inswing doors are equipped with a weatherstrip assembly mounted to the bottom of the door that sweeps against the threshold. Finished to match the color of the frame.



**Commercial Threshold**

The Series 900 Hinged Door utilizes a low-profile commercial threshold that favors ease of entry over protection from the elements. Available in satin and bronze anodized finishes. Capable of meeting ADA (Americans with Disabilities Act) requirements.

Note: The commercial threshold may be less effective at preventing water penetration than the standard threshold and therefore may not be appropriate in all climates, conditions, and exposures.



**Single-Point Lock**

When the added protection of a multi-point lock isn't necessary, the single-point lock secures the door in one place. Available only with the premium handle.



**Multi-Point Lock**

Lever-activated, the multi-point lock provides additional vertical strength and security through several locking points in the jamb or inactive stile. Available only with thermally broken aluminum hinged doors.

**Premium Handle**

Our premium handle features a minimal one-piece design and comfortable grip. Finish choices are available in brushed nickel or black. Available only with the 4.71" stile (aluminum and thermally broken aluminum) and the 2.79" thermally broken aluminum stile.



**Type C Lock**

Our standard deadbolt lock, the heavy-duty Type C features a 1.12" backset on narrow-stile doors and a 1.5" backset on medium-stile doors.

**Finishes**

Aluminum finishes are available in-stock, as designer selections, and can be customized to match nearly any color. For approximate finish options, see page 122. For exact paint swatch samples, contact us.



# Series 980 Pivot Door

Boldly dramatic and decidedly modern, our Series 980 Pivot Door may be the most impressive way to customize your home's entryway. Able to swing in or out, its unique distribution of weight makes creating large openings with just a single panel not only possible, but also desirable.



## Clean Design

Large glass and a minimal frame allow for more light and a modern style. For commercial use, a 4.5" frame depth is comparable to that of typical storefront systems.

## Durability

Built to last, our pivot doors are designed with secured corners and top and bottom rails that nest with the stiles for a permanent, rigid connection.

## Climate Ready Glass

Our dual-paned low-E glass can be customized in a variety of types, colors, and thicknesses for improved privacy, protection, and thermal efficiency.

## Configurations and Sizes

The Series 980 Pivot Door can swing in or out and is available in stile widths of 4.71" (with panels up to 60' wide and 120' tall). For even more design flexibility, it can be partnered with any of our window styles.

## Finishes

Aluminum finishes are available in-stock, as designer selections, and can be customized to match nearly any color. For approximate finish options, see page 122. For exact paint swatch samples, contact us.



## Commercial Threshold

The Series 980 Pivot Door utilizes a low-profile commercial threshold that favors ease of entry over protection from the elements. Available in satin and bronze anodized finishes. Capable of meeting ADA (American Disabilities Act) requirements.

Note: The commercial threshold may be less effective at preventing water penetration than the standard threshold and therefore may not be appropriate in all climates, conditions, and exposures.



## Smooth Operation

Our custom pivot hardware supports the weight of the door on the bottom arm, creating less stress on the frame and allowing the door to swing smoothly and effortlessly. Even massive doors weighing up to 500 pounds open with ease. An optional concealed overhead closure and secondary lock ensure the door is self-closing.



## Heavy Duty Hardware

Standard hardware includes the Type C lock (our standard deadbolt lock with a 1.5" backset), top and bottom roller catches to help pull the door in tight, and a 48" tall ladder-style pull handle available in a brushed stainless or black finish.